



CENTRAVENT™

CVT Lighted Return Vent (LRV)



CVT Standard Return Vent (SRV)



CVT VENT INSTALLATION

- *Two person installation recommended
- *Follow all Federal & Local building codes

© 2017 CENTRAVENT | 1327 Trade Center Dr., Suite 340, Rancho Cordova, CA 95742

This brochure shall satisfy legal patent marking/notice provisions of various jurisdictions including the virtual patent marking and notice provisions of 35 U.S.C. § 287(a). The following CentraVent products and services are covered by one or more of the following associated U.S. Patents 10,619,872, 10,760,802. Additional patents may be pending in the United States and elsewhere – please contact us if you have questions.

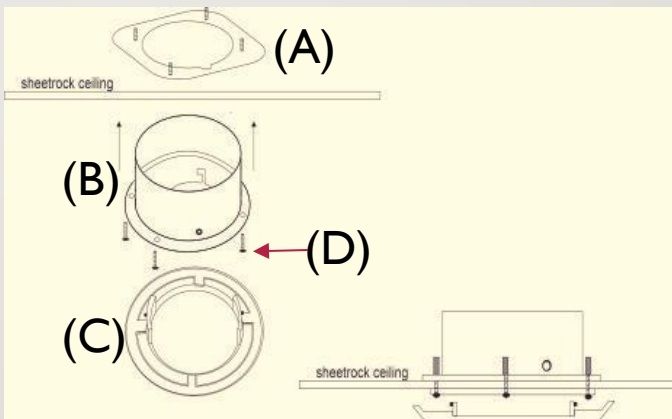
1) Choose which rooms you would like to install the CVT Return Vent. Then use the CVT Return Vent Housings duct collar as a template for where the CVT Return Vent will be located. Before marking the area, have a second person in the attic assisting you with the designated spot. Make sure the insulation is moved away from the area you plan on putting the vent. Also make sure it is clear of any water, electrical lines or trusses.



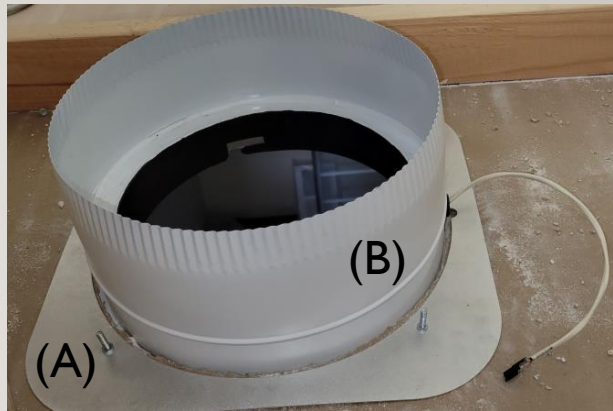
3) Once the circle is drawn, use a keyhole saw to cut the circle out and remove the cut pieces.



2) Hold the CVT Return Vent Housing against the ceiling and outline the outside of the housing (Not the flange),

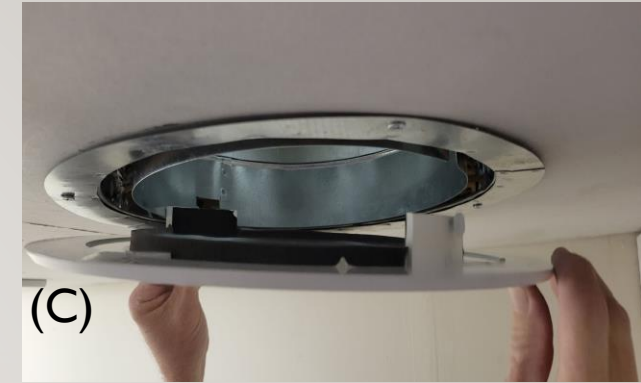
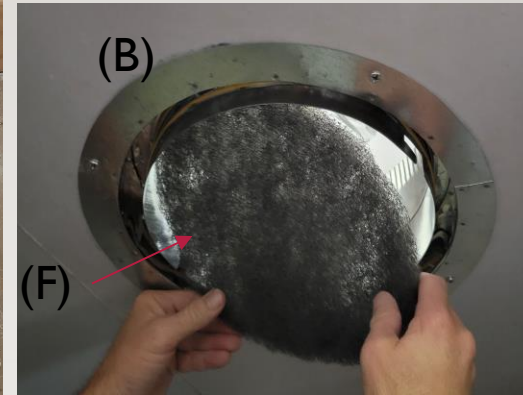
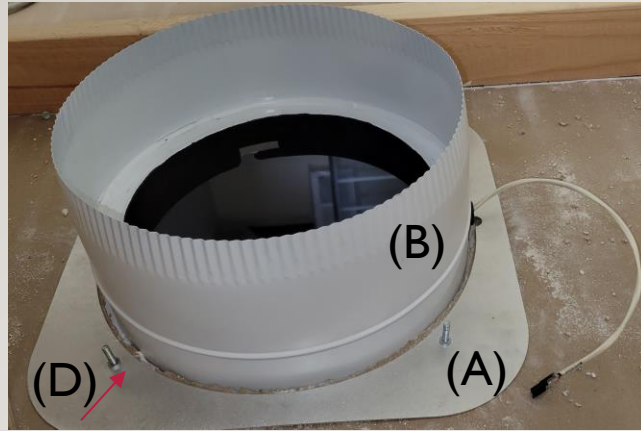


4) In the attic, lay the metal (A) Vent Housing Base Plate over the cut hole in the ceiling sheet rock.



5) Push the (B) CVT Return Vent Housing up through the hole and have the person in the attic help line up the (A) Vent Housing Base Plate over the (B) CVT Return Vent Housing, flush to the sheet rock and line up the electrical notch-out on the Vent Housing Base Plate to the electrical wires protruding the CVT Return Vent Housing.

(A) Vent Housing Base Plate (B) CVT Return Vent (C) CVT Vent Grill (D) 4 screws (E) SWITCHEX® (F) Washable Filter



6) Use (D) 4 flat head self tapper screws to attach the (B) CVT Return Vent housing Flange, to the (A) CVT Vent Housing Base Plate. The Base Plate has 4 female pems. Line up the pre drilled hole on the (B) CVT Return Housing Flange with the pems and screw through the sheet rock, into the pems of the (A) CVT Vent Housing Base Plate.

7) Install the (F) Washable Filter into the (B) CVT Return Vent inner ledge.

8) Attach the (C) CVT Return Vent Grill, by lining up the knobs with the slots and then rotate into place. Do Not Over Rotate.



9) If the CVT Return Vent has is Standard (without LED Lights) then the final step is to have the HVAC contractor attach the flexible ducting to the return plenum.



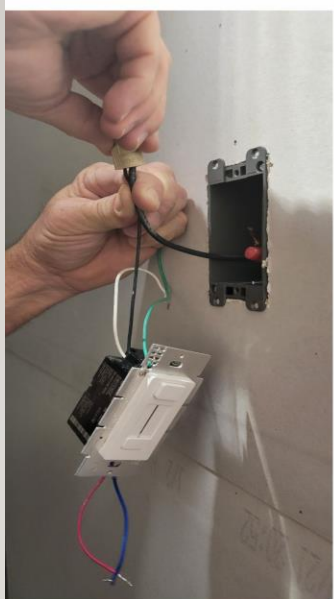
Easy to remove Grill for filter access.

(A) Vent Housing Base Plate (B) CVT Return Vent (C) CVT Vent Grill (D) 4 screws (E) SWITCHEX® (F) Washable Filter

(D)



10) If installing the CVT Lighted Return Vent, the LED Lights connect to the (E) dimmable wall switch. Follow all local and National building codes. **Some installations may require a new 2"x4" wall box for the wall switch.



11) Locate the breaker and turn power off. (Failure to do so can result in bodily injury or death). Use a volt meter to verify power is off. Follow installation instructions when wiring SWITCHEX® Run low voltage wiring down wall and wire to the low voltage on the SWITCHEX®.



12) Attach the wall switch to the wall and secure. Connect the low voltage to wiring for the lights at the vent housing in the attic and secure.



13) Attach wall switch cover and turn on to verify operations.



(A) Vent Housing Base Plate (B) CVT Return Vent (C) CVT Vent Grill (D) 4 screws (E) SWITCHEX® (F) Washable Filter



14) The final step is to have the HVAC contractor attach the flexible ducting to the return plenum.



CENTRAVENT™

© 2017 CENTRAVENT | 1327 Trade Center Dr., Suite 340, Rancho Cordova, CA 95742

This brochure shall satisfy legal patent marking/notice provisions of various jurisdictions including the virtual patent marking and notice provisions of 35 U.S.C. § 287(a). The following CentraVent products and services are covered by one or more of the following associated U.S. Patents 10,619,872, 10,760,802. Additional patents may be pending in the United States and elsewhere – please contact us if you have questions.